

-
- Interface for connecting a PC to the *Digital plus by Lenz*® system.
 - All system functions supported by command station can be controlled via the PC (by means of a suitable software sold separately).
 - RS232 interface
 - Baud rate settable (19,200; 38,400, 57,600 and 115,200 Bd).
 - LI101F Tool: Software enclosed for setting the baud rate and XpressNet address. This software operates with Windows® 9x, 2000, ME, and XP.
 - Additional information and data protocol on enclosed data medium.
 - Small, space-saving housing.
 - All cables required are included in the delivery.

Digital
— *plus*
by *Lenz*

Information Interface LI101F

art. no. 23110
1. edition, 06 03

Contents

Important advice, please read first!	3
Connection to the XpressNet	4
Connection to the computer	4
Commissioning the LI101F	5
The luminous diode (LED)	5
Installing the software	6
The program "LI101F Tool"	6
Selecting the COM port	8
Setting the XpressNet address of the LI101F	9
Setting the baud rate	10
Selecting the language	11
Problems with communication	12
Terminating the program	12
Data protocol between LI101F and computer	13
Demo programs	13

Important advice, please read first!

The LI101F is a component of the *Digital plus by Lenz*[®] system and was submitted to intensive testing before delivery. Lenz Elektronik GmbH guarantees fault-free operation provided you follow the advice given below:

The LI101F is only authorised for operation with other components of your *Digital plus by Lenz*[®] system as well as the RS232 serial interface of your computer. Any use other than that described in this operating manual and the manual on the data medium is not permitted and all guarantees will become invalid if the LI101F is used inappropriately.

Connect the LI101F only to devices which are designated for such connection. This operating manual will inform you which devices are suitable. Even if other devices (also those of other manufacturers) use the same connectors, you must not operate the LI101F with those devices. *The fact that the connectors are similar does not automatically mean that you may use them for operation.* This is also true even if you are dealing with devices for the controlling of model railways.

Do not expose the LI101F to damp or direct sunlight.

If you still have unanswered questions even after reading this operating manual, then please contact us. There are four different ways of contacting Lenz Elektronik GmbH:

Postal address:	Lenz Elektronik GmbH Hüttenbergstraße 29 D-35398 Gießen	Lenz Agency of North America PO Box 143 Chelmsford, MA 01824
Phone:	++49 (0) 6403 900 133 The recorded message will inform you of times when we are available for consultation.	++1 978 250 1494
Fax:	++49 (0) 6403 900 155	++1 978 455 LENZ
E-mail:	info@digital-plus.de	support@lenz.com

If you have any problems with the LI101F, just contact us, stating the following information:

- The device you are using (LZ100, compact etc.)
- The version numbers of these devices and the version number of your LI101F

Connecting the interface

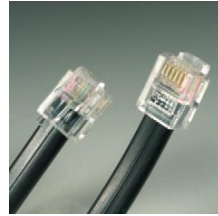
Switch off both your *Digital plus by Lenz*® system as well as your computer before connecting your interface!

Only use the cables enclosed with the interface for the connection.

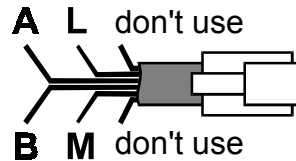
Connection to the XpressNet

Use this cable enclosed in the delivery for connecting the XpressNet.

Plug one end into the socket "XpressNet" of the LI101F; connect the other end to an adapter LA152. The LY006 cable (purchased separately) can be used if you desire to plug the LI101F into a Din Plug



If you wish to connect the LI101F with the terminal screws LMAB of a LZ100 or LZV100, simply cut the cable in the middle and connect the cable wires with the corresponding terminal screws of the LZ100 or LZV100. The pin assignment is shown in the illustration on the right.



Connection to the computer

For the operation of the LI101F your computer requires a free RS232 port. Use the connecting cable for the RS232 interface to connect the LI101F to your computer. Use an adapter plug (purchased separately) if your computer has a 25-pin connection at the RS232 interface.

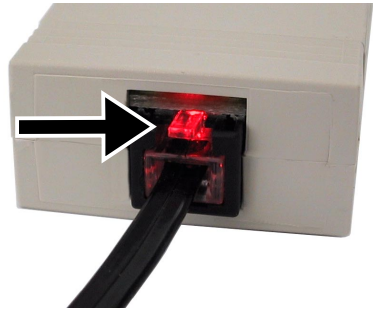
Important advice!

Make sure that you do not create other electrical connections between the computer and the model railway layout apart from those via the LI101F. Otherwise you might damage the components used in which case all guarantees will become invalid!

Commissioning the LI101F

When you have finished connecting your LI101F, you may switch your *Digital plus by Lenz*® system and the computer back on.

The luminous diode (LED) of the LI101F will shine if the connection created between the interface and the XpressNet is correct. This red LED is located in the XpressNet socket. When on the transparent phone plug will shine. During operation the LED will remain on.



The luminous diode (LED)

The LED of the LI101F signals operational readiness. Constant shining of the LED indicates that the device is in operation and communicating with the command station. Constant flashing, however, indicates that the LI101F is unable to communicate with the command station. Possible explanations are:

- The command station is in programming mode (a decoder is being read out or programmed on the programming track).
- The A or B line of the XpressNet are either not connected or wrongly connected.
- The LI101F is the sixth device being used by the Compact (or Atlas Commander) or the SET02/03 (these devices address a maximum of 5 XpressNet devices).
- The LI101 has an XpressNet address not supported by the system. (SET02/03 only support XpressNet addresses 1,2,3,29 and 30).
- The command station does not address the XpressNet devices (damaged command station).

Installing the software

1. Insert the enclosed data medium "Information and software for LI101F" into your floppy disk or CD-ROM drive.
2. Click on "Start" and then "Execute".
3. Enter:
"D:\LI101F\LI101F_SETUP.EXE "

(If necessary, replace the letter "D" of the drive with a letter valid for your computer). The setup program is started and installs the program "LI101F Tool". Simply follow the instructions shown on the screen.

After successful setup you will find a new icon on your desktop:

Double-click on this icon to start the LI101F Tool.



The program "LI101F Tool"

The LI101F Tool serves to check the communication between your PC and the digital system.

When the program is started, the PC will immediately try to communicate with the *Digital plus by Lenz*® command station via the interface. The program assumes that the interface is connected to COM1 of your PC. (If you have selected a different free RS232 port, you should first set the used COM port in the program. Please see "Selecting the COM port" for further details).

If the connection has been established correctly and you are using COM1 of your PC, the program window will display the relevant information of the *Digital plus by Lenz*® system being used and the interface:

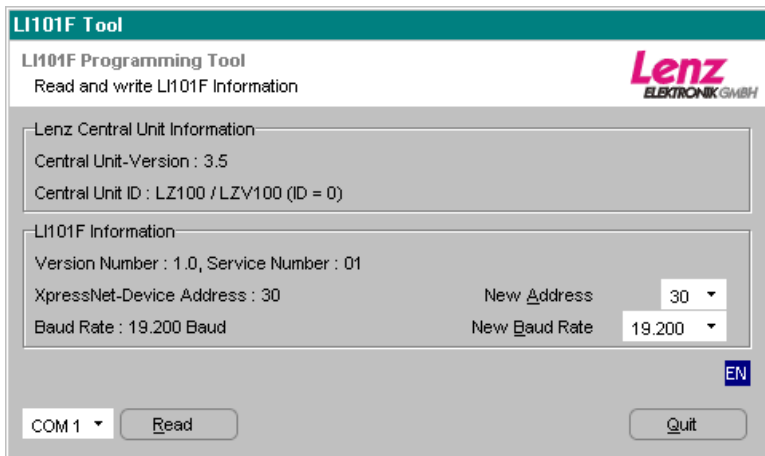


Figure 1: The program window

(The information shown in the area "Lenz Central Unit information" may differ from the above-shown illustration, depending on the command station used and its software version.)

In the upper part "Lenz Central Unit information" the first line shows the software version of the command station and the second line displays its identification. This identification indicates which command station (LZ100, LZV100, SET02 or Compact) is used. This information will be displayed accordingly.

In the lower part "LI101F Information" the first line shows the version and service number of the LI101F. Underneath you will find the set XpressNet address and the baud rate. These settings can be altered with the LI101F Tool.

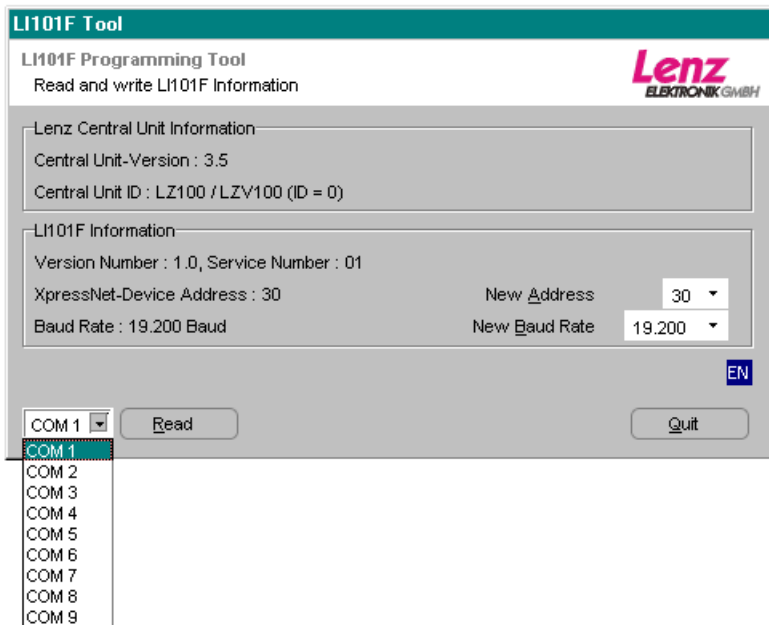
The set COM port is shown at the bottom left of the program window. Next to it you will find the button which you can use to start the reading-out process of the information of the interface and the command station. Use the "Quit" button on the extreme right to terminate the program.

If the areas "Lenz Central Unit information" and "LI101F Information" show the information displayed in Figure 1, the LI101 has been connected correctly and the PC is able to communicate with the Digital plus by Lenz® system via the LI101F. The information shown in the area "Lenz Central Unit information" may differ from the above-shown illustration, depending on the command station used and its software version.

Selecting the COM port

In order for the LI101F Tool to communicate with the interface LI101F, the correct COM port must be selected.

Click on the arrow pointing downwards next to the display of the COM port to open a drop-down list of available COM ports. Select the COM port to which you have connected the LI101F.



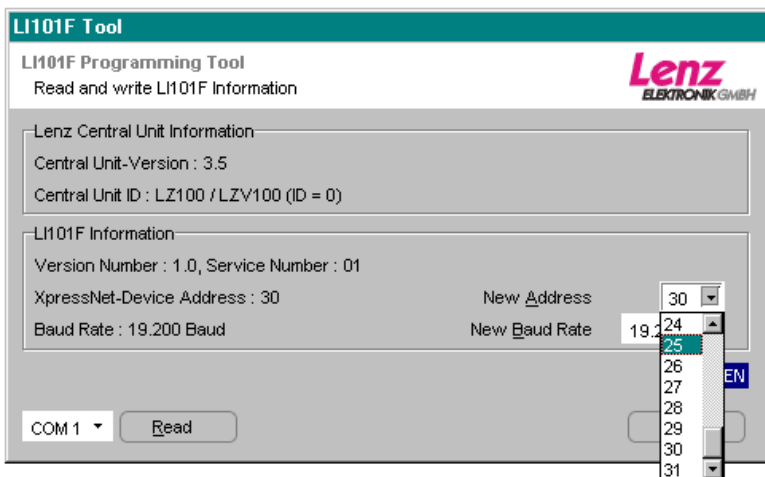
Picture 2

Click on the button "Read". The program now attempts to communicate with the LI101F via the newly set COM port. If successful, you will see the information displayed in Figure 1. Please note that the information shown in the area "Lenz Central Unit Information" may differ from the above-shown illustration, depending on the command station used and its software version.

Setting the XpressNet address of the LI101F

The interface has an XpressNet (XBUS) address, just like any other Digital plus input device. This is the address used by the command station to call up the interface. Ex-works, the interface is set to address 30.

If you want to alter the address set in the interface, simply click on the arrow pointing downwards next to the display "New Address". A drop-down list showing the XpressNet addresses which are permitted will open up.



Picture 3: Selecting the XpressNet address

Select the desired new address by clicking on it. Please note that each XpressNet address may only be used once (address 29 is reserved for the transmission module LC100. Use this address only if you are not using an LC100)!

When you have set the new XpressNet address, the button "Write" will appear next to the button "Read". Click on the button "Write" to enter the new XpressNet address into the LI101F. Afterwards, the LI101F data will be reread and checked.

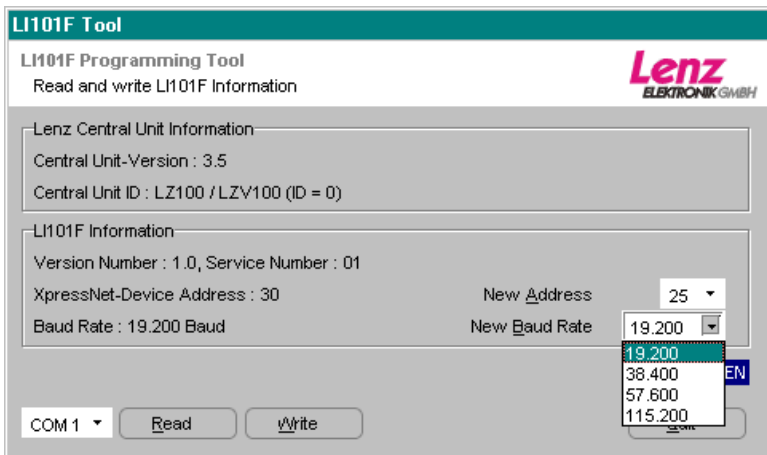
Setting the baud rate

The following baud rates are available for the data transmission between interface and computer: 19,200; 38,400 57,600 and 115,200 Baud. Ex-works, the LI101F is set to 19,200 Bd.

Please note:

Check which baud rate(s) your control program requires for successful operation. Use the recommended baud rate or rates.

If you want to alter the baud rate, click on the arrow pointing downwards next to the display "New Baud Rate". A drop-down list showing the baud rates which are available will open up.

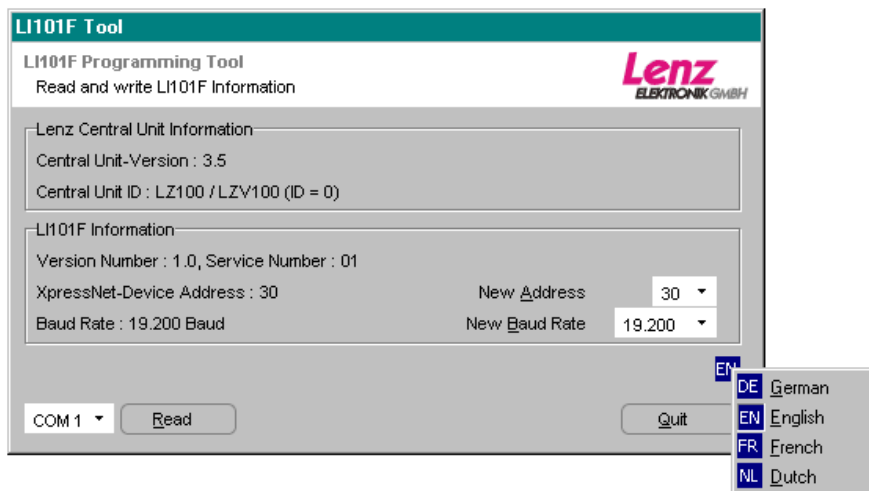


Picture 4: Selecting the baud rate

Select the desired baud rate by clicking on it.

When you have set the new baud rate, the button "Write" will appear next to the button "Read". Click on the button "Write" to enter the new baud rate into the LI101F. Afterwards, the LI101F data will be reread and checked.

Selecting the language

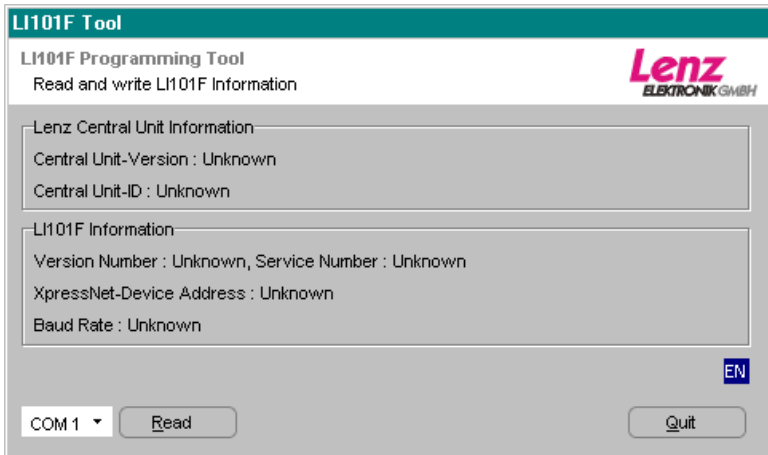


Picture 5: Selecting the language

Using the right button of the mouse, click on this symbol to open the language menu. Select the program language which you prefer.

Problems with communication

If the LI101F Tool is unable to communicate with the interface, you will see the following display:



Picture 6: Display in case of faulty communication

Please check whether

- the correct COM port is set.
- the connecting cable between COM and LI101F is connected correctly.
- the interface is connected correctly with the XpressNet (in which case the LED of the LI101F will not shine).
- the digital system is turned on (if the system is not turned on the LED of the LI101F will not shine).

Terminating the program

Click on the button "Quit" to terminate the LI101F Tool.

Data protocol between LI101F and computer

You will find a detailed description of the communication and the protocol between computer and interface in a Pdf-file on the enclosed data medium. File name: "XpressNet_LI101F.PDF".

Demo programs

The interface may include one or several demo versions on how to control your model railway via a computer. These demo versions were made available to us by several software manufacturers. Lenz Elektronik GmbH is not liable for the proper functioning of these programs and does not offer solutions for problems concerning their setup and function. If you have any questions, please contact the respective software manufacturer.

We reserve the right to make changes in line with technical progress, product maintenance or changes in production methods. We accept no responsibility for errors which may occur for similar reasons. We accept no responsibility for direct or indirect damage resulting from improper use, non-observance of instructions, use of transformers or other electrical equipment which is not authorised for use with model railways, or transformers or other electrical equipment which has been altered or adapted or which is faulty. Nor can we accept responsibility when damage results from unsupervised adjustments to equipment or from acts of violence or from overheating or from the effects of moisture etc.. Furthermore, in all such cases guarantees become invalid.

Windows® and Windows NT® are registered trade marks of the Microsoft Corporation.
Acrobat® Reader Copyright Adobe Systems Incorporated. All rights reserved. Adobe and Acrobat are trade marks of Adobe Systems Incorporated which may be registered in certain legal areas.

© 2003 Lenz Elektronik GmbH

Lenz
ELEKTRONIK GMBH

Hüttenbergstraße 29
D – 35398 Gießen
Phone: 06403 900 133
Fax: 06403 900 155
info@digital-plus.de
www.digital-plus.de

Lenz
ELEKTRONIK GMBH