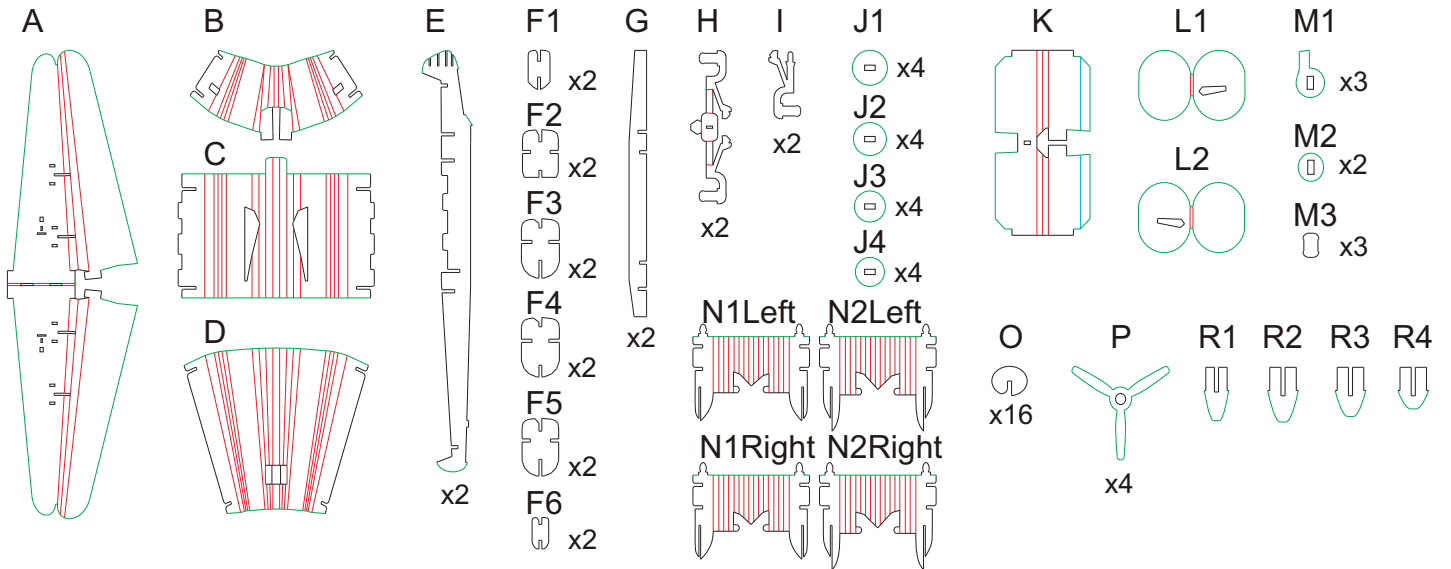




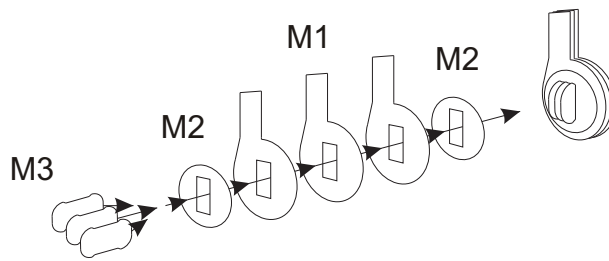
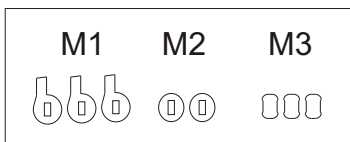
PL: INSTRUKCJA - UWAGA! PRZED MONTAŻEM NALEŻY WSZYSTKIE ELEMENTY STARANNIE POWYGINAĆ
 EN: INSTRUCTION - CAUTION! BEFORE STARTING ASSEMBLING, ALL PARTS SHOULD BE CAREFULLY BENT
 DE: INSTRUKTION - ACHTUNG! VOR DER INSTALLATION ALLE TEILE GENAU VERBIEGEN
 FR: INSTRUCTIONS - ATTENTION! AVANT L'ASSEMBLAGE, TOUTES LES PIÈCES DOIVENT ÊTRE
 PLIER AVEC PRÉCAUTION
 IT: ISTRUZIONI - ATTENZIONE! PRIMA DELL'INSTALLAZIONE, PIEGARE CON ATTENZIONE TUTTI GLI ARTICOLI



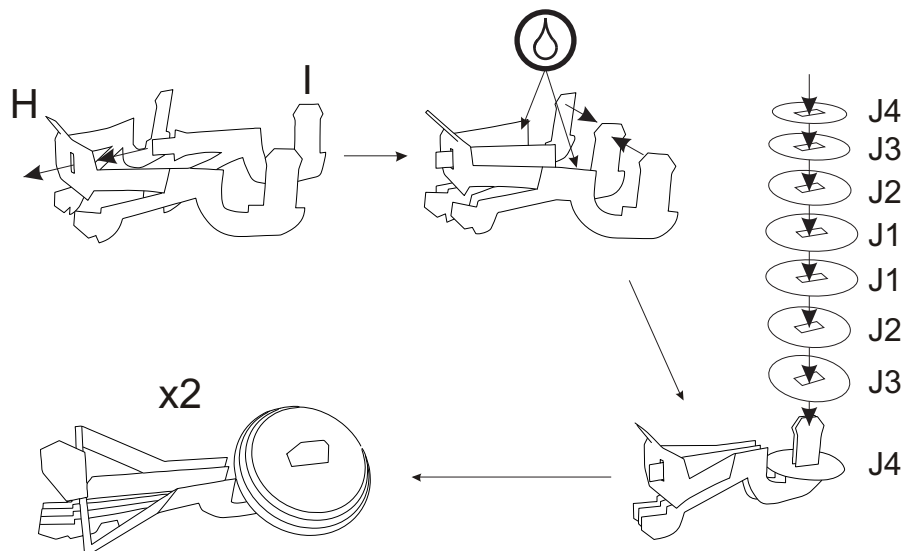
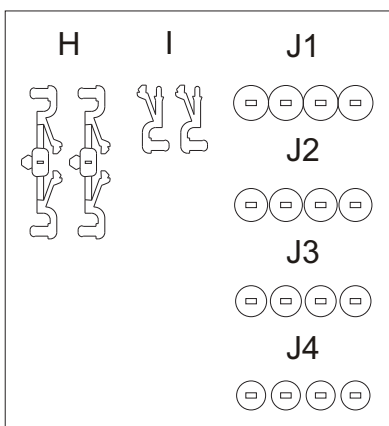
 PL: MIEJSCE KLEJENIA
 EN: GLUE HERE
 DE: HIER ZUSAMMENKLEBEN
 FR: COLLER ICI
 IT: INCOLLARE QUI

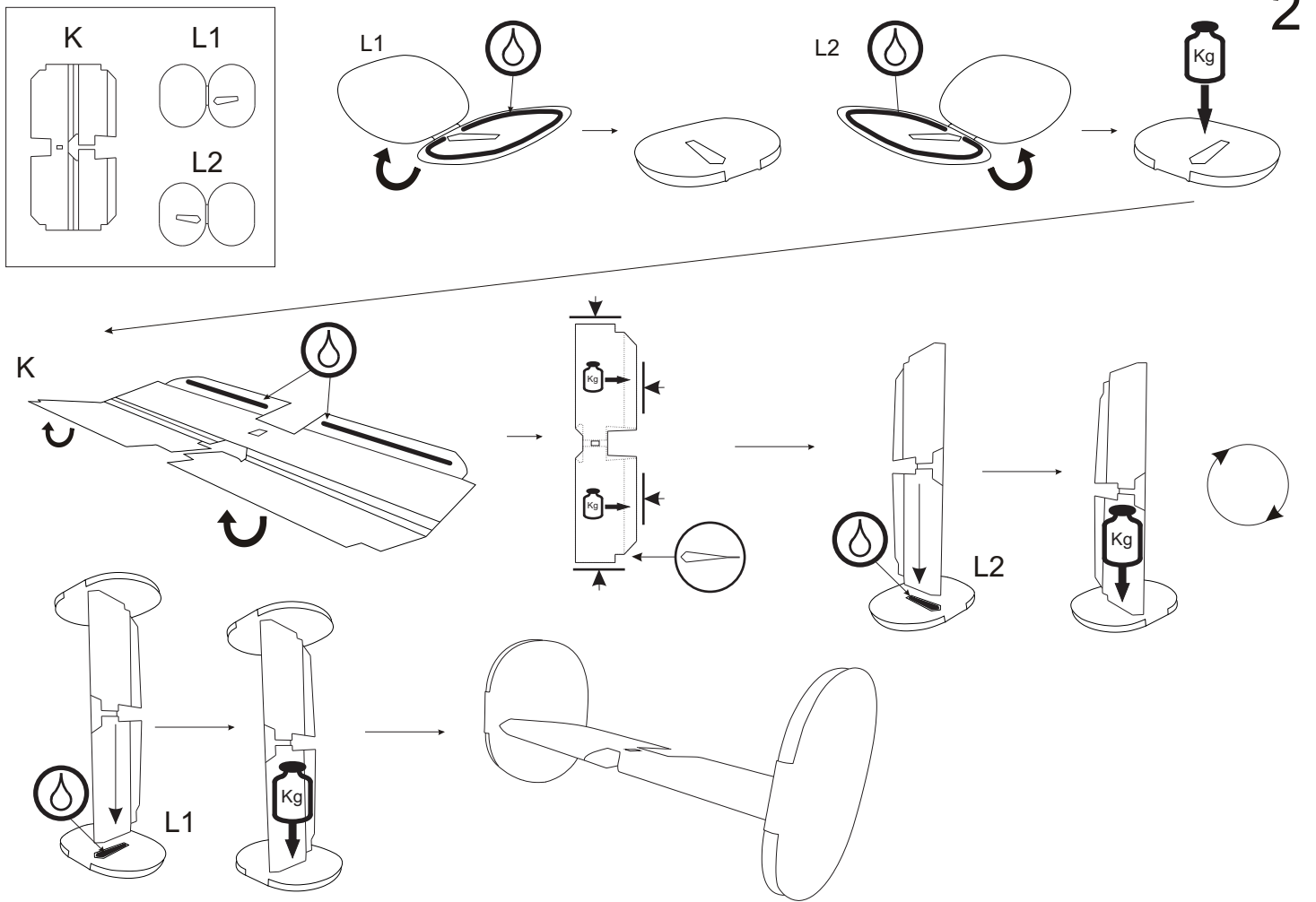
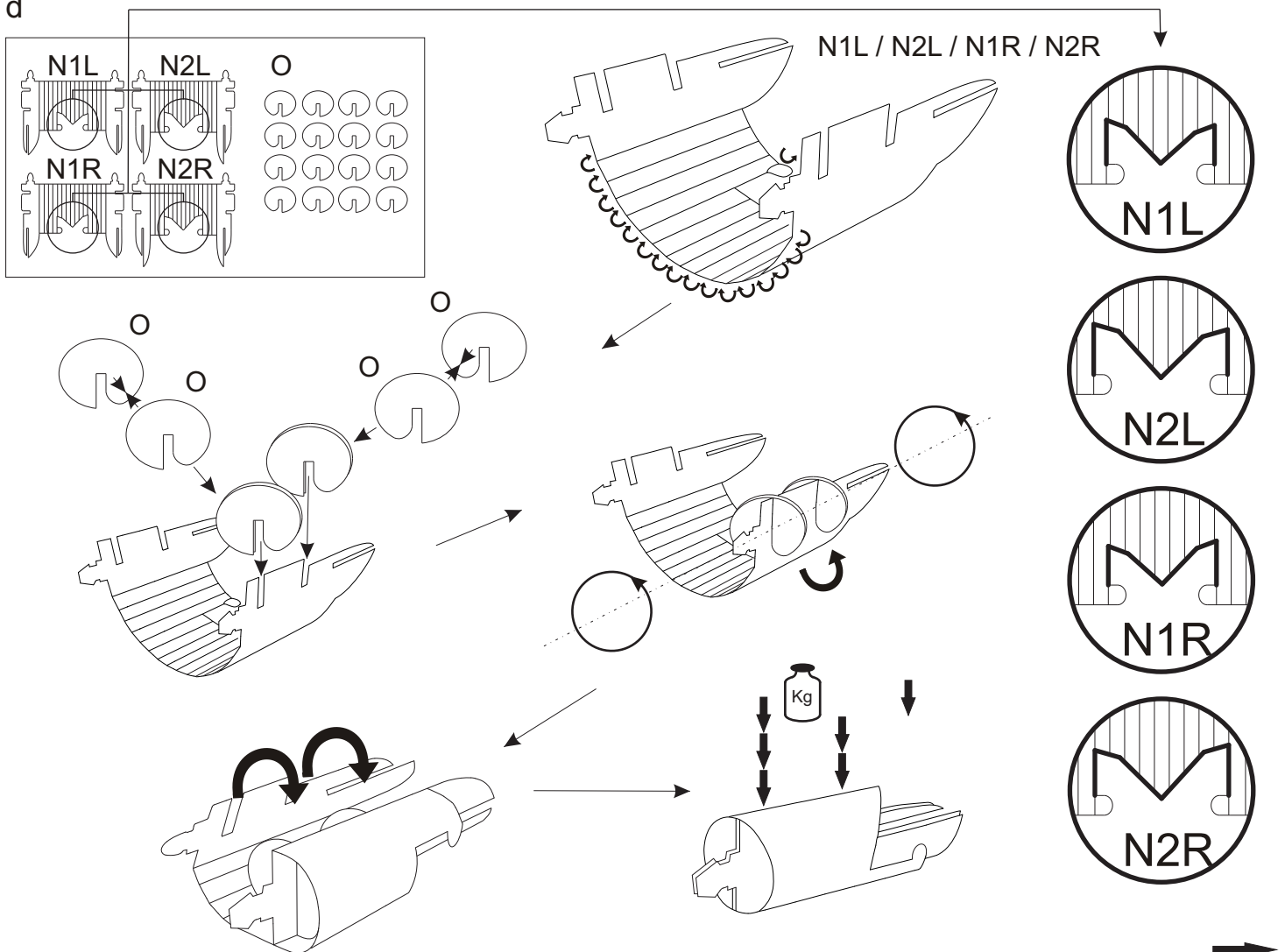
 PL: UŻYJ SPINACZA LUB MAŁEGO ŚRUBOKRĘTA
 EN: USE PAPER CLIP OR SMALL SCREWDRIVER
 DE: BENUTZE EINE BÜROKLAMMER ODER EINEN KLEINEN SCHRAUBENZIEHER
 FR: UTILISER UN TROMBONE OU UN PETIT TOURNEVIS
 IT: UTILIZZARE GRAFFETTA O UN PICCOLO CACCIAVITE

a

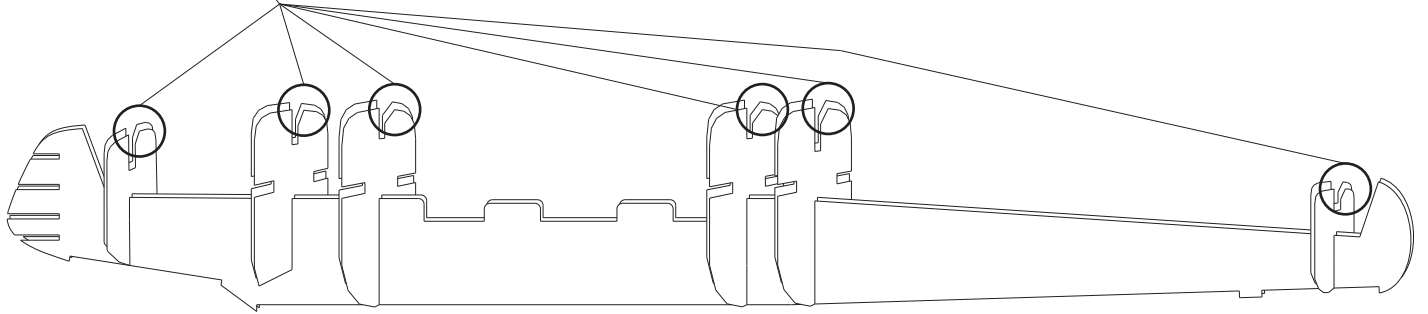
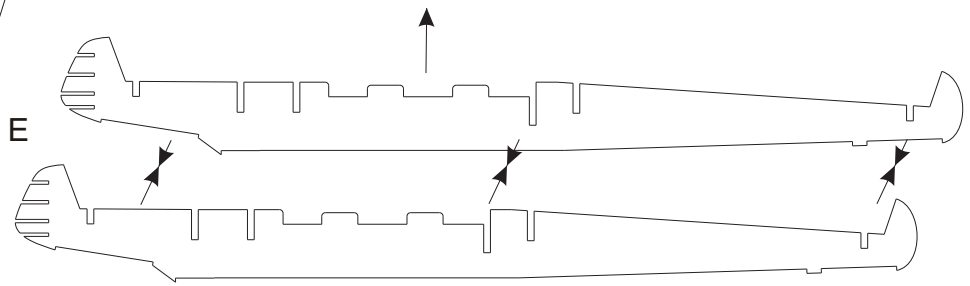
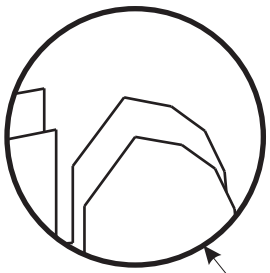
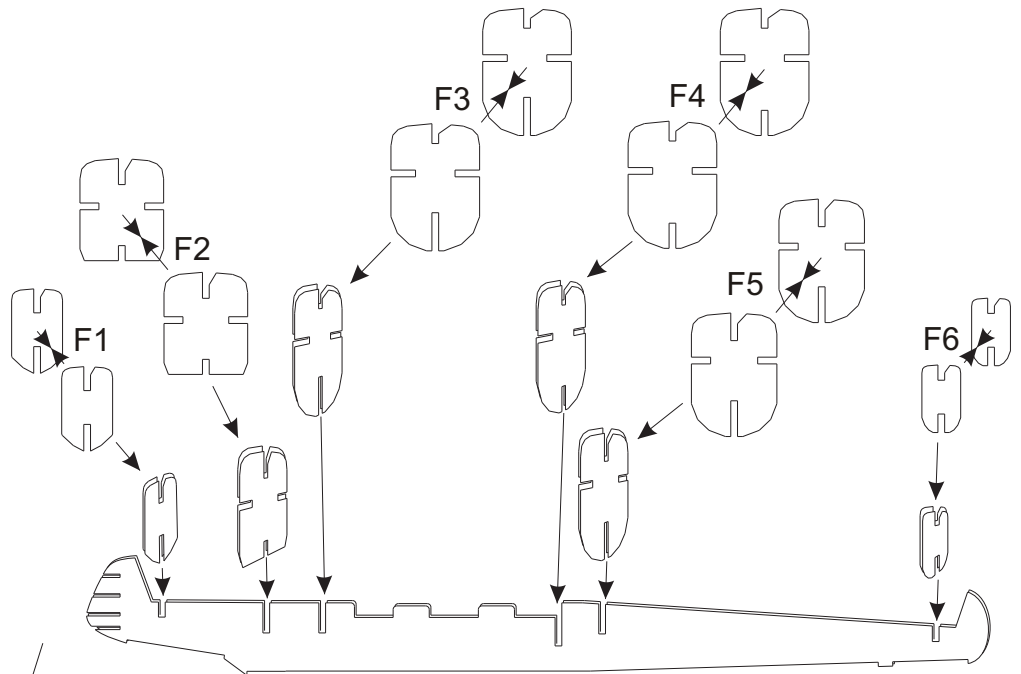
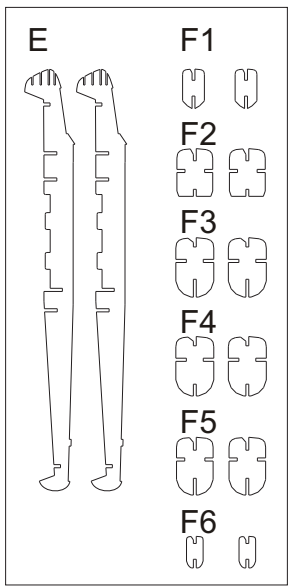


b

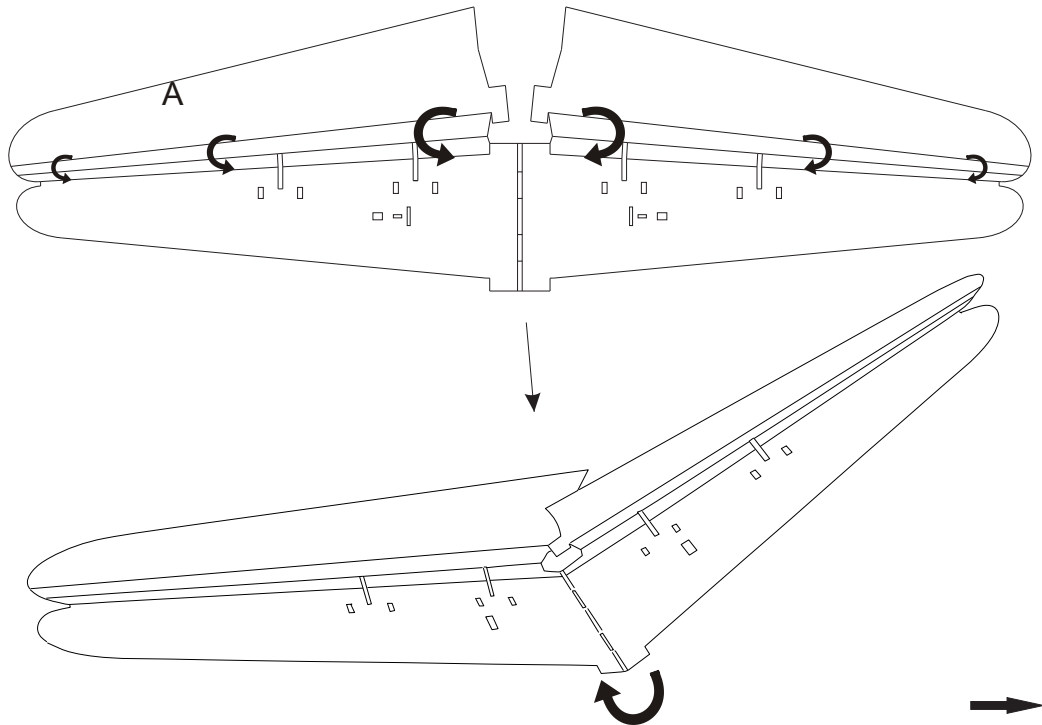
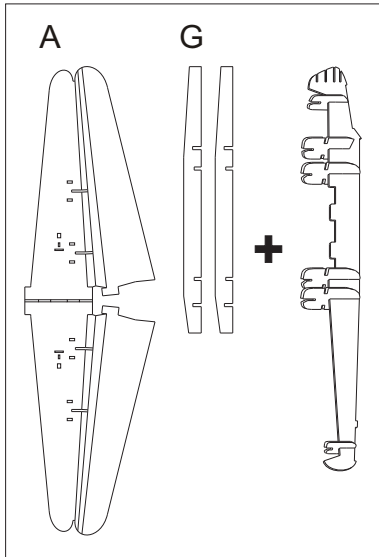


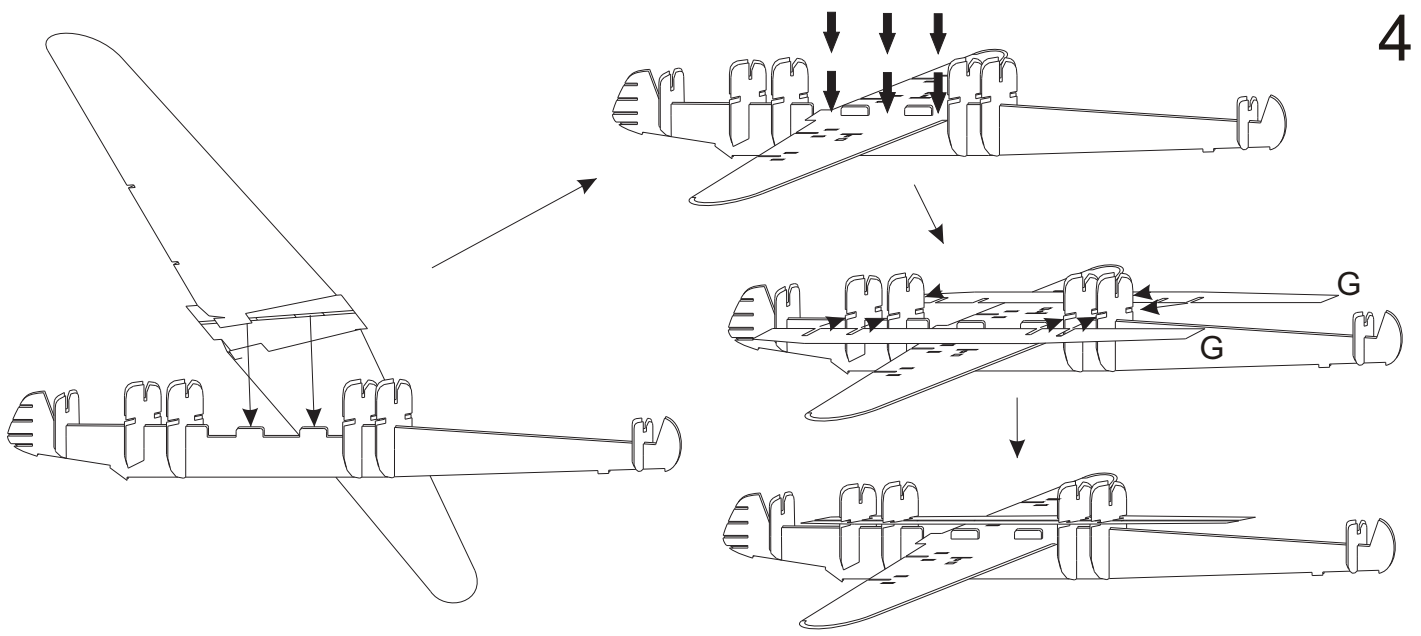
c**d**

e

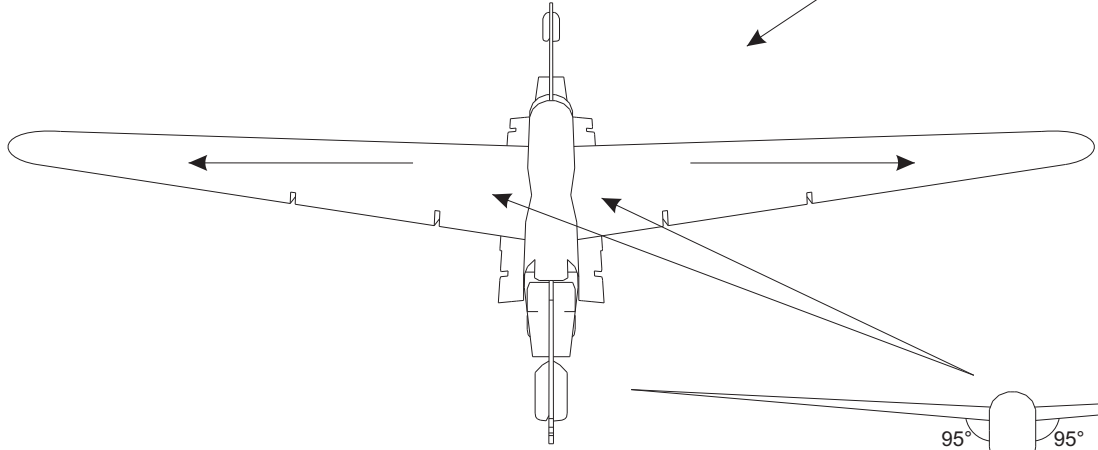
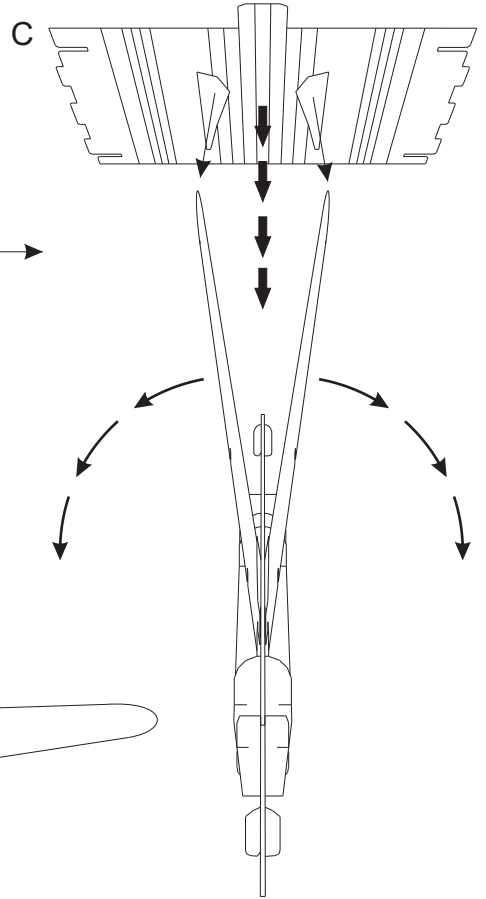
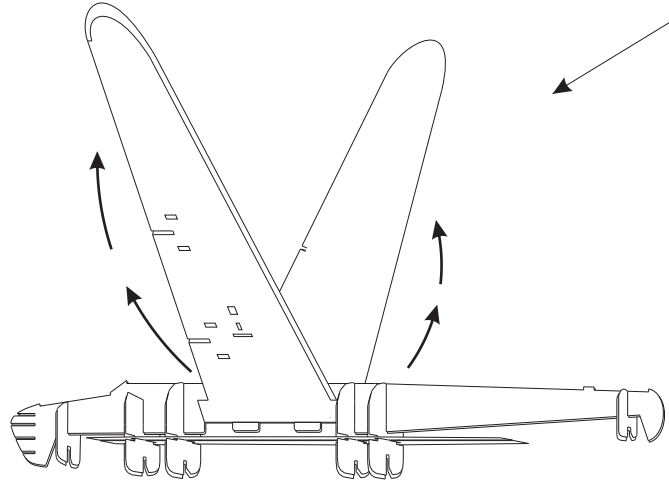
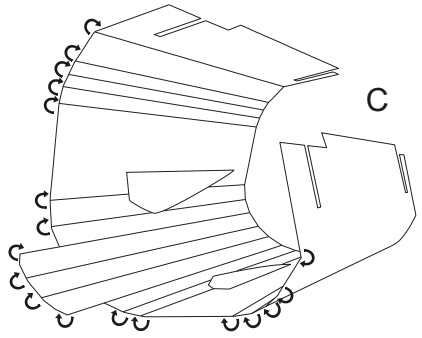
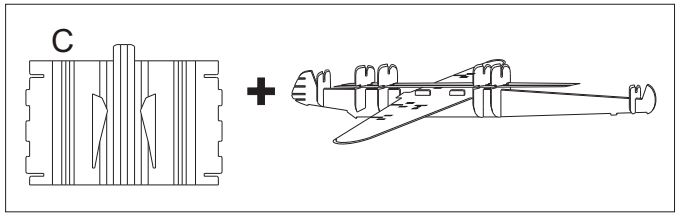


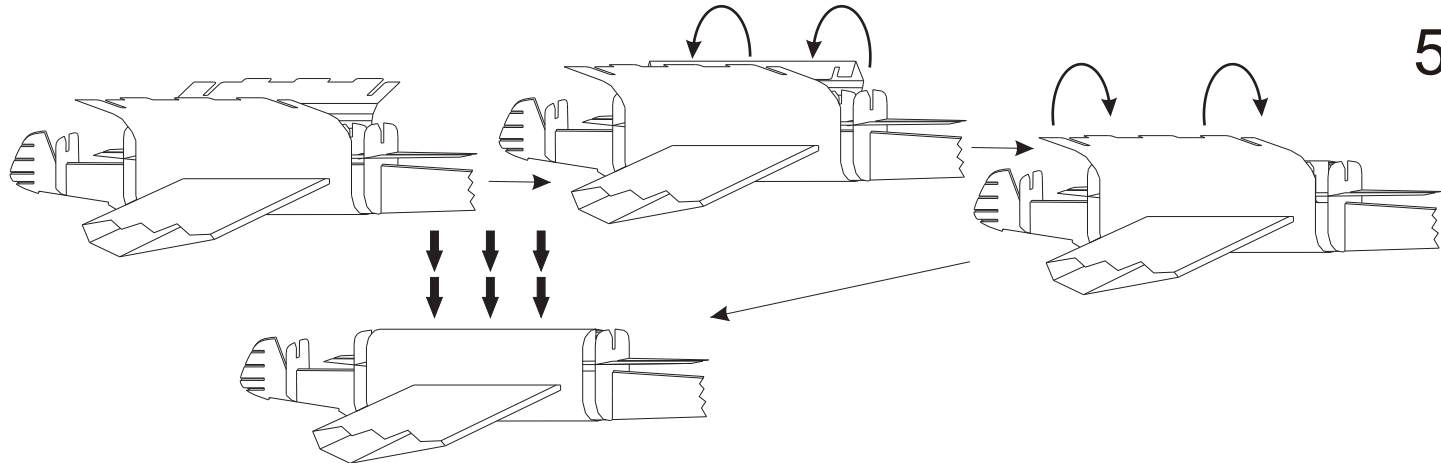
f



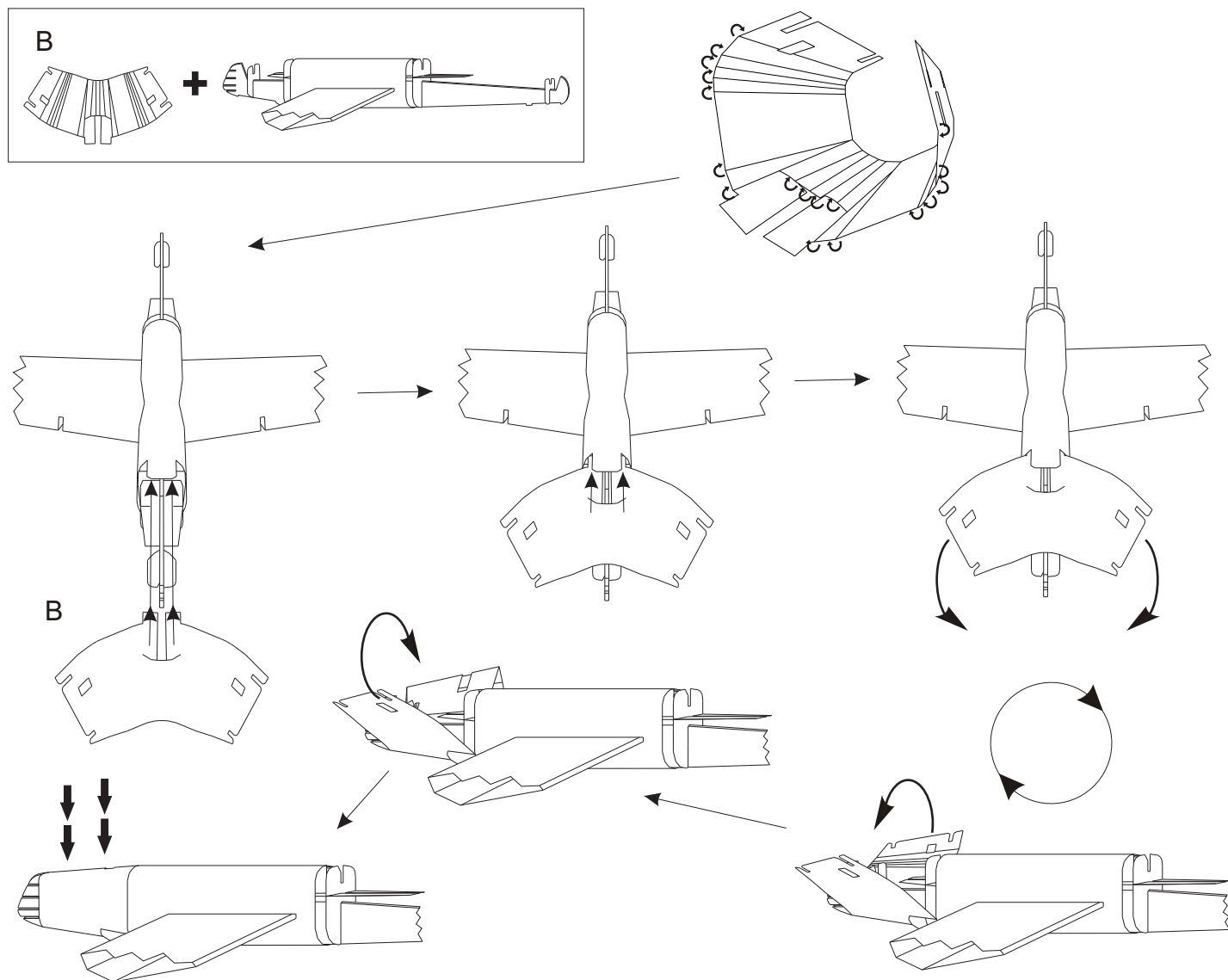


g

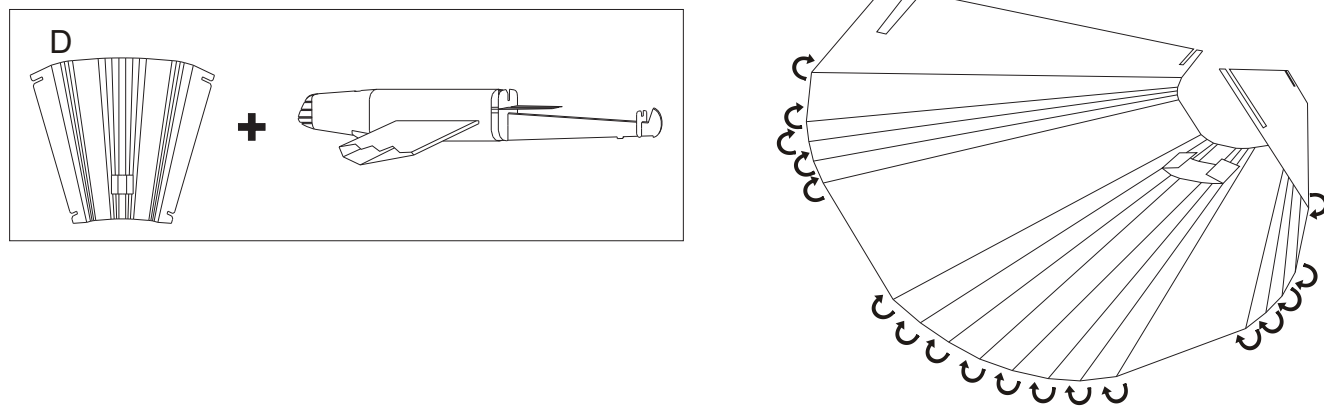




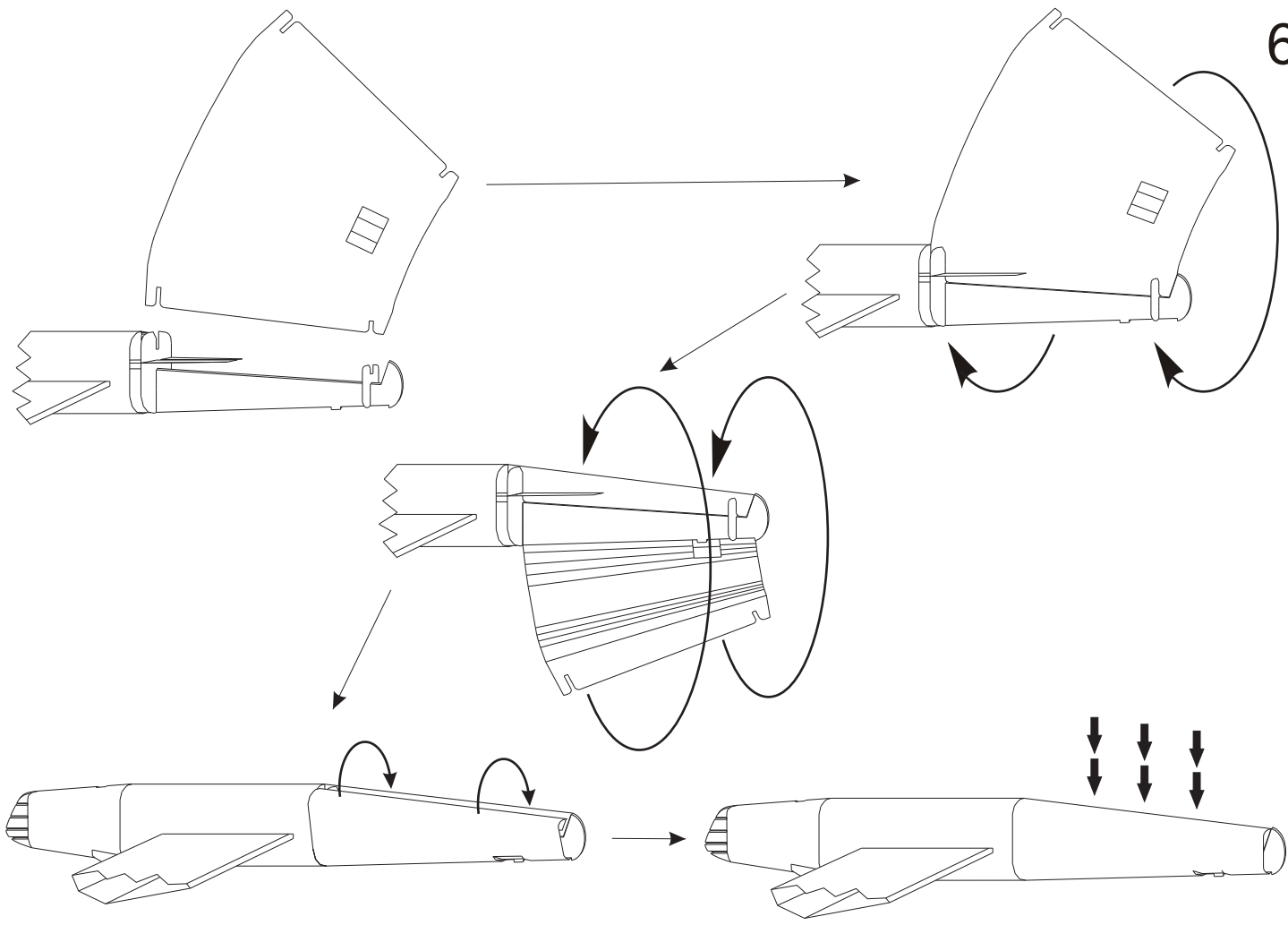
h



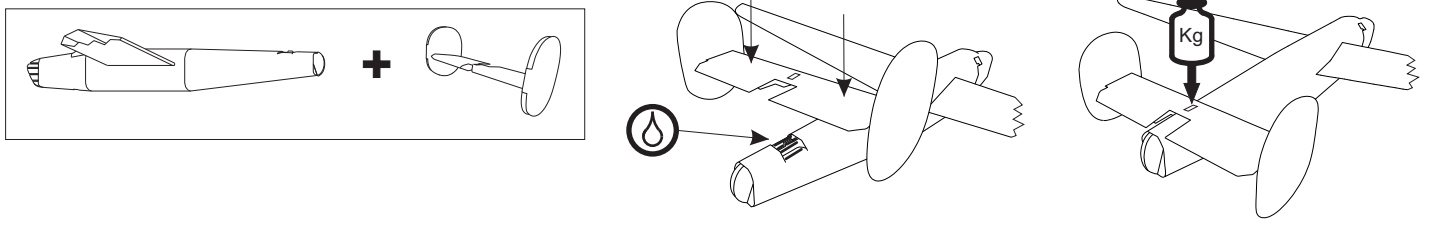
i



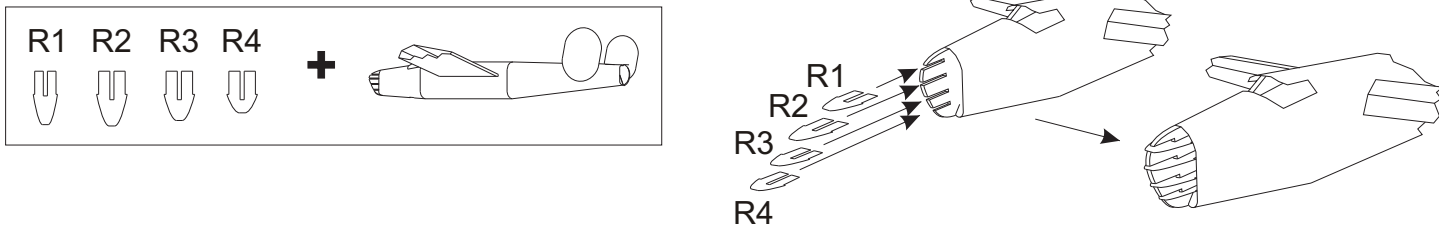
6



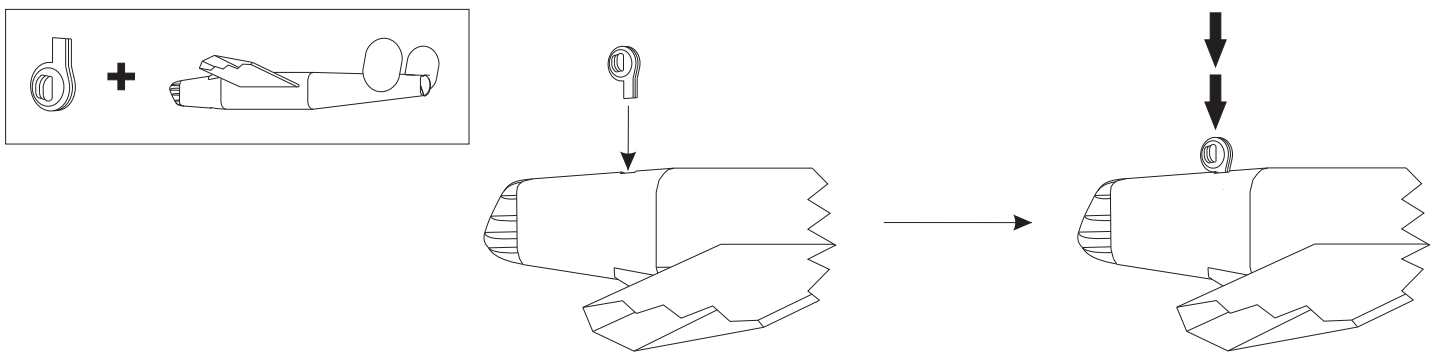
j

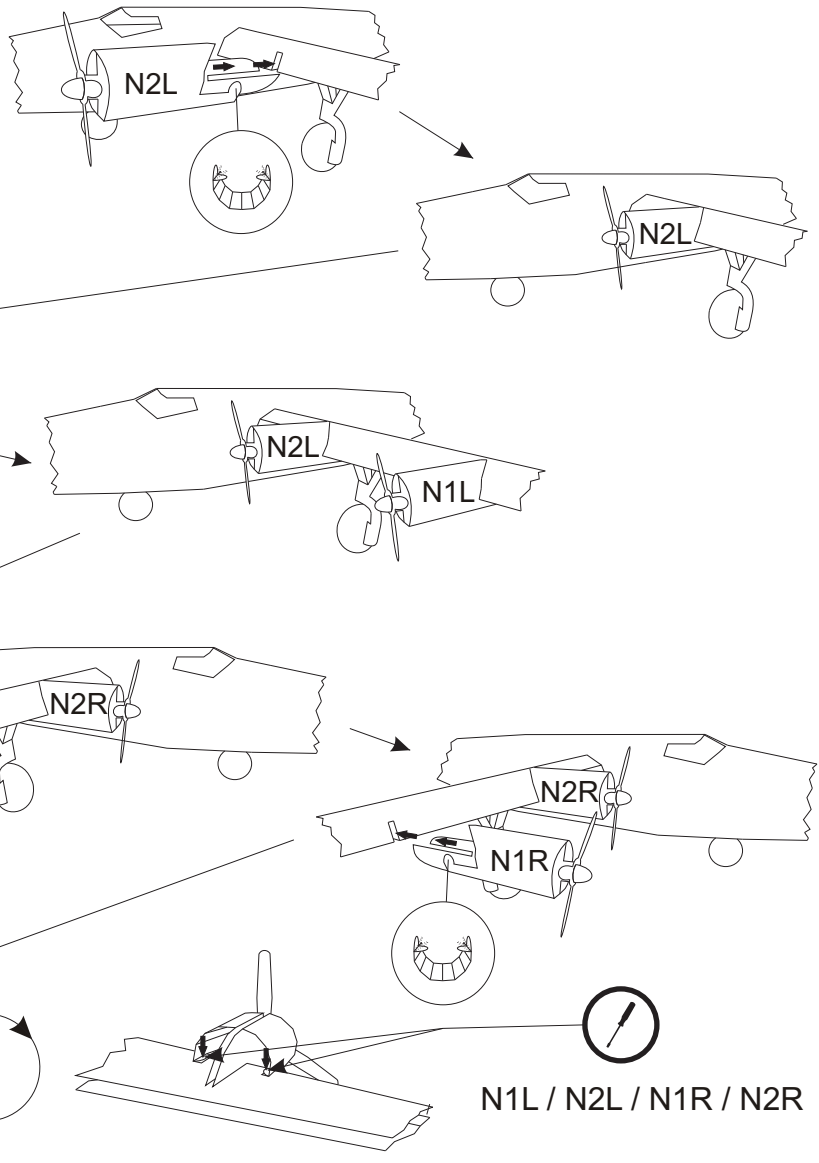
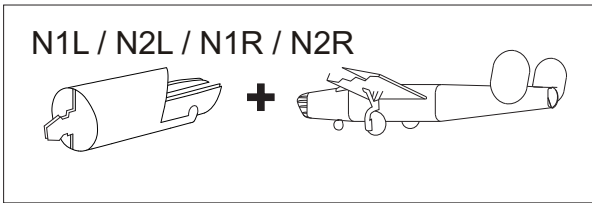
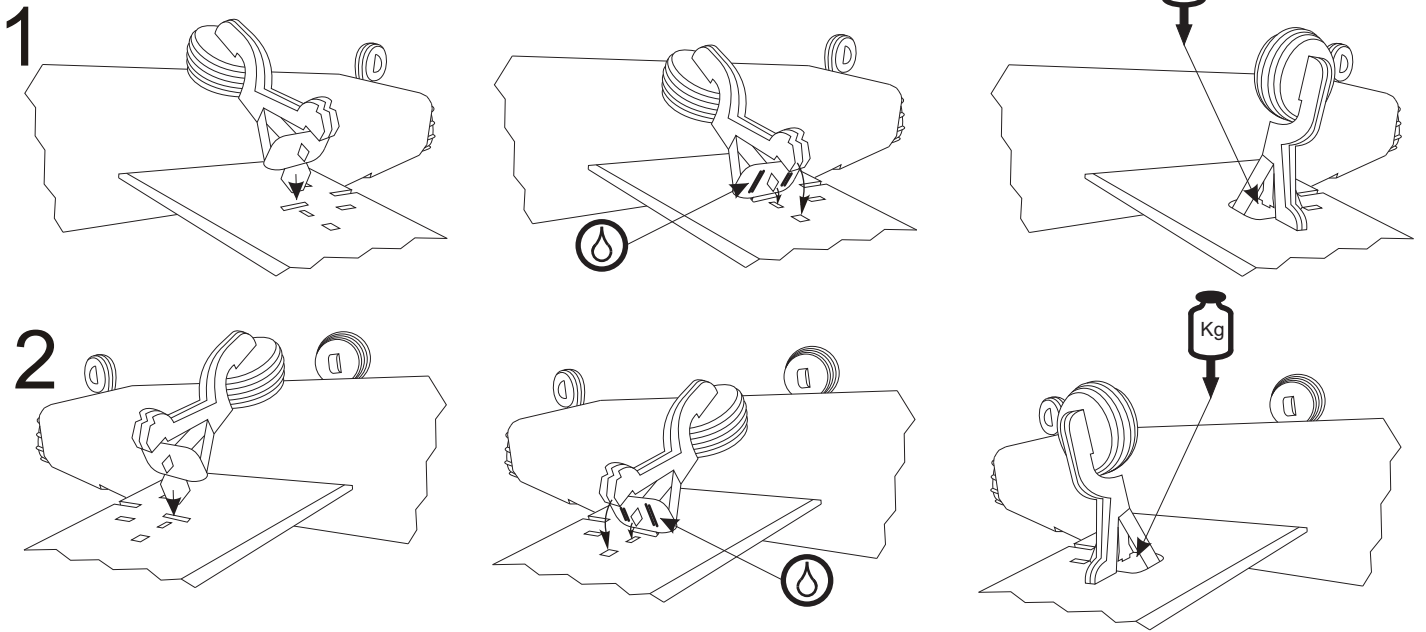
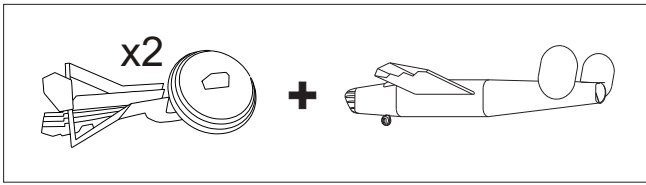


k



l





N1L / N2L / N1R / N2R



